



<b>EAN:</b>	4013288031983	<b>Size:</b>	177x13x13 mm
<b>Part number:</b>	05118024001	<b>Weight:</b>	20 g
<b>Article number:</b>	2050 PH Micro	<b>Country of origin:</b>	CZ
		<b>Customs tariff number:</b>	82054000

- Kraftform Micro screwdriver for cross-recess Phillips screws
- Multi-component Kraftform Micro handle for fast and ergonomic screwdriving
- Anti-roll feature and swivel cap for rapid twisting
- The Wera Black Point tip offers an exact fit and optimum corrosion protection
- Take it easy tool finder: colour coding according to profile and size

High quality Wera Micro screwdriver for precision mechanical jobs. Rapid twisting results from fixing the hand on the head and using the fast-turning zone just below. This makes time-consuming grip adjustments unnecessary. Power zones with integrated soft sections ensure the transfer of high loosening and tightening torque; a precision zone for the right rotation angle during fine adjustment work. The Black Point tip offers optimised corrosion protection and an exact fit. "Take it easy" tool finder with colour coding according to profiles and size stamp - for simple and rapid accessing of the required tool.



**Web link**

[https://products.wera.de/en/screwdrivers\\_series\\_kraftform\\_micro\\_2050\\_ph\\_micro.html](https://products.wera.de/en/screwdrivers_series_kraftform_micro_2050_ph_micro.html)

Wera - 2050 PH Micro  
05118024001 - 4013288031983

Wera Werkzeuge GmbH  
Korzter Straße 21-25  
D-42349 Wuppertal  
Tel: +49 (0)2 02 / 40 45-0  
E-Mail: [info@wera.de](mailto:info@wera.de)

Series Kraftform Micro

**Kraftform Micro handle**



Screwdriving jobs in electrical and precision engineering applications are often tedious and time-consuming. We learned from users what is important for them: working speeds, torque, precision - and we then focused particularly on these issues.



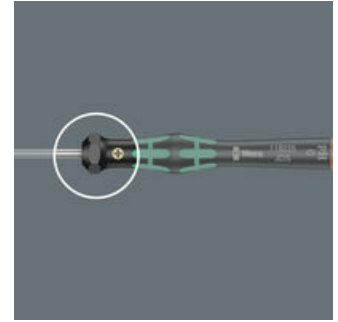
Multi-component screwdriver handle for ergonomic working.

**The refined screwdriver for electronics technicians**



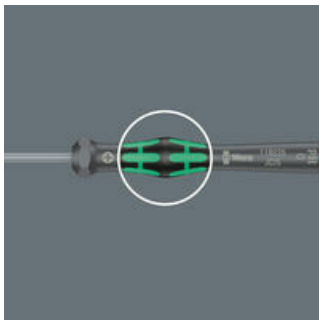
The Kraftform Micro, with its three zones and their specific arrangement, satisfies these requirements perfectly. The free-turning cap that provides support for the hand works with these advantages, enabling quick and easy precision work.

**The precision zone**



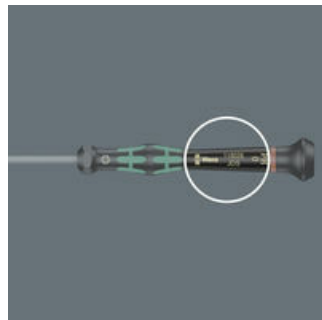
The precision zone directly above the blade gives the user a better feel for the right rotation angle during fine adjustment work.

**The power zone**



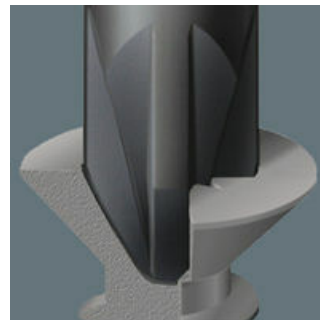
The power zone has integrated soft zones near the blade tip to ensure high torque transfer for loosening or tightening screws without losing contact with the screw.

**The fast-turning zone**



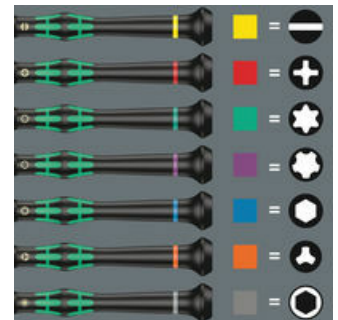
The fast-turning zone just below the rotating cap allows rapid twisting.

**Wera Black Point tip**



The Wera Black Point tip and a refined hardening process ensure long service life of the tip, improved corrosion protection and an exact fit.

**"Take it easy" Tool Finder**



Screwdrivers with "Take it easy" tool finder: colour coding according to profile and size stamp.

**Web link**






[https://products.wera.de/en/screwdrivers\\_series\\_kraftform\\_micro\\_2050\\_ph\\_micro.html](https://products.wera.de/en/screwdrivers_series_kraftform_micro_2050_ph_micro.html)

Wera - 2050 PH Micro  
05118024001 - 4013288031983

Wera Werkzeuge GmbH  
Korzter Straße 21-25  
D-42349 Wuppertal  
Tel: +49 (0)2 02 / 40 45-0  
E-Mail: info@wera.de

## Series Kraftform Micro

Further versions in this product family:

					
		mm	mm	mm	inch
05345290001 <sup>1),2)</sup>	PH 000	40	97	1.5/2.5	1 9/16
05118019001 <sup>1),2)</sup>	PH 00	40	97	1.8/2.5	1 9/16
05118020001 <sup>1)</sup>	PH 00	60	97	2.5	2 3/8
05118026001 <sup>3)</sup>	PH 0	40	97	3.0	1 9/16
05118022001 <sup>3)</sup>	PH 0	60	97	3.0	2 3/8
05118023001	PH 1	60	97	4.0	2 3/8
<b>05118024001</b>	<b>PH 1</b>	<b>80</b>	<b>97</b>	<b>4.0</b>	<b>3 1/8</b>

1) Optimised for Asian PH screws

2) On the output side, the blade is turned to a nominal length of 10 mm

3) Size 0 modified according to JCIS 0 (Japanese Camera Industrial Standard)

## Web link

[https://products.wera.de/en/screwdrivers\\_series\\_kraftform\\_micro\\_2050\\_ph\\_micro.html](https://products.wera.de/en/screwdrivers_series_kraftform_micro_2050_ph_micro.html)

Wera - 2050 PH Micro  
05118024001 - 4013288031983

Wera Werkzeuge GmbH  
Korzter Straße 21-25  
D-42349 Wuppertal  
Tel: +49 (0)2 02 / 40 45-0  
E-Mail: info@wera.de